

# OFFICE/RETAIL SPACE – Lewisville, TX



**LOCATION:** 896 N. Mill Street. – easy access to I-35E!

**AVAILABLE:** Suite 201A: 218 RSF – single office - \$525/mo.  
Suite 201C: 211 RSF – single office - \$290/mo.  
Suite 201D: 211 RSF – single office - \$290/mo.  
Suite 205: 502 RSF – storage w/roll-up door + shelving - \$380/mo.  
Suite 206: 709 RSF – single office - \$850/mo. (Storefront)  
Suite 207: 371 RSF – single office - \$445/mo. (Storefront)

**SIGNAGE:** Available with Suites 205, 206 & 207.

**AREA:** Light industrial with some retail. Northern end of “Old Town” Lewisville!

**EXPENSES:** Tenant is only responsible for janitorial in their Premises.

**INTERNET:** Building is wired with **Verizon FIOS!**

For further information contact: **Rich Muller**



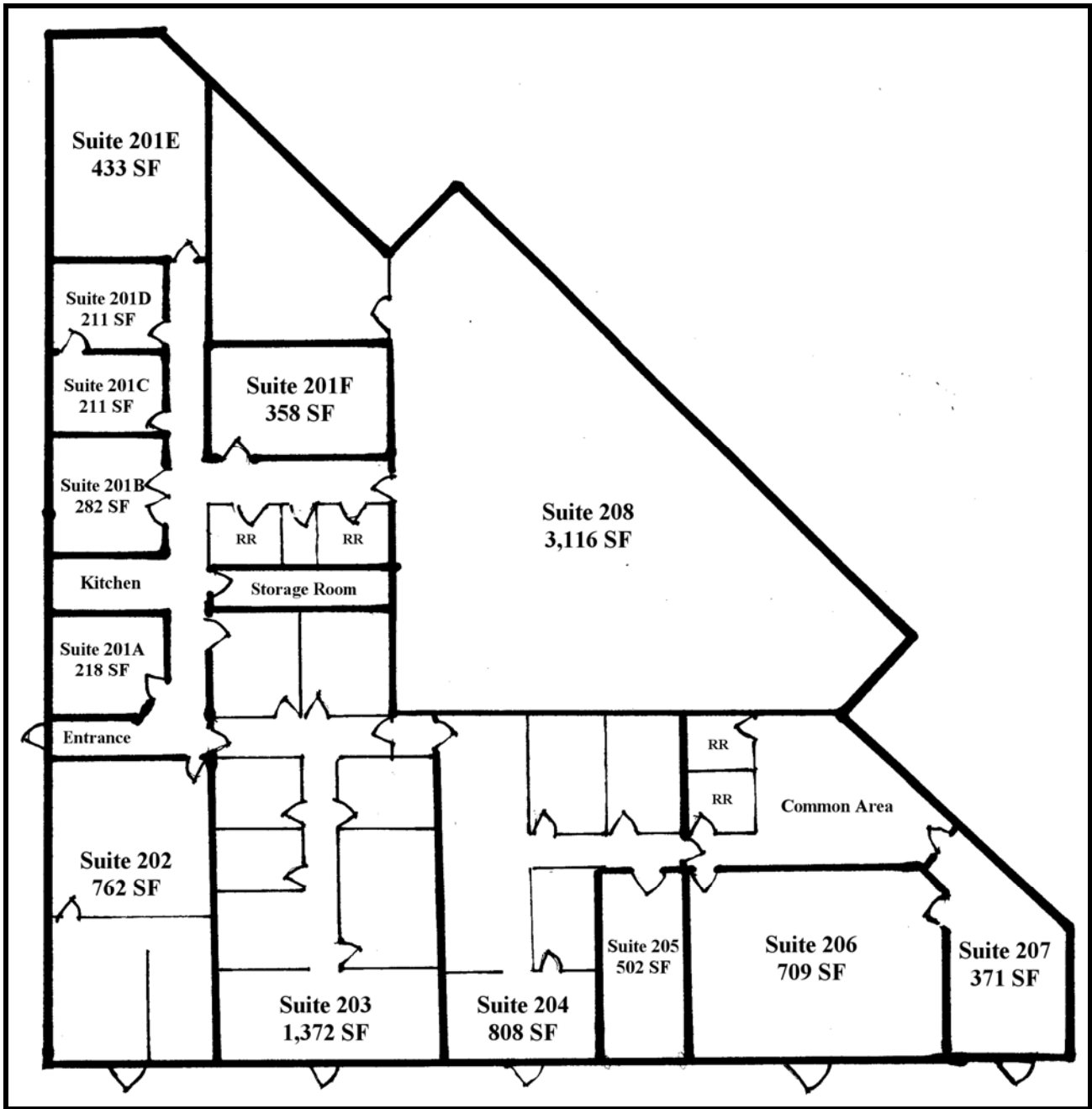
**Vintage Realty**

**2980 Long Prairie Rd., Suite D**

**Flower Mound, TX 75022**

**972/355-0669 or Fax 972/355-5477**

**Email: [Rich@VintageRealty.net](mailto:Rich@VintageRealty.net) or Web Site: [www.VintageRealty.net](http://www.VintageRealty.net)**



## Mill Street

This information is believed to be accurate, but no representation or warranty, express or implied, as to its accuracy or completeness is made by any party. The presentation of this property is submitted subject to errors, omissions, change of price or prior sale or lease, or withdrawal without notice.