

GRAPEVINE SHOPPING CENTER

600 W. Northwest Highway



Location: NWC of Northwest Highway & Scribner St. (Lighted intersection).

Tenants: Old West Cafe, Domino's Pizza, Barber Shop

Traffic: Over 25,000 CPD (City of Grapevine 3/2005)

Space Available: 650 SF.

Base Rent: \$12.50/SF + NNN's.

For further information contact: **Rich Muller**



Vintage Realty

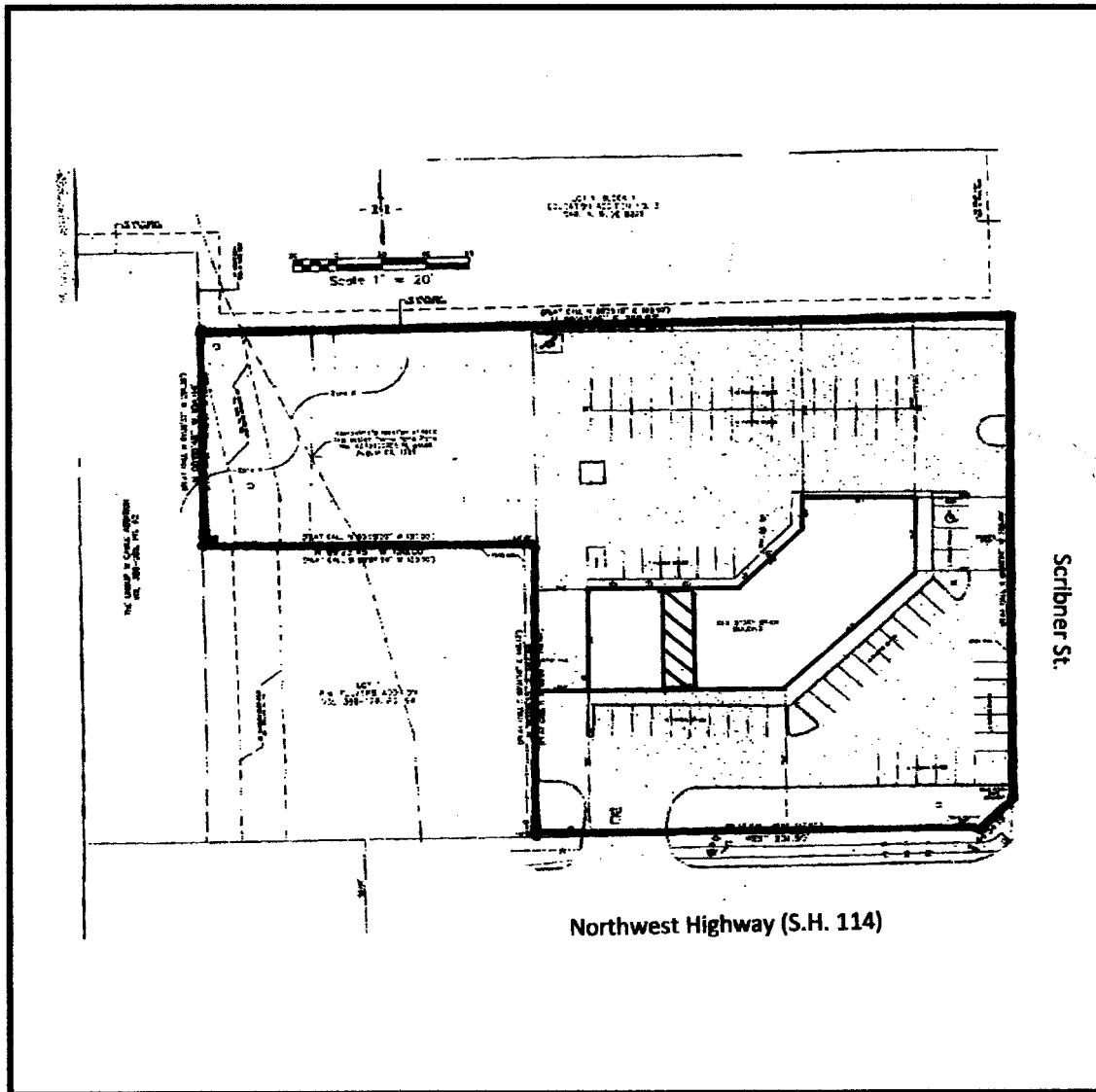
2980 Long Prairie Rd., Suite D

Flower Mound, TX 75022

972/355-0669 or Fax 972/355-5477

email: Rich@VintageRealty.net or, www.VintageRealty.net

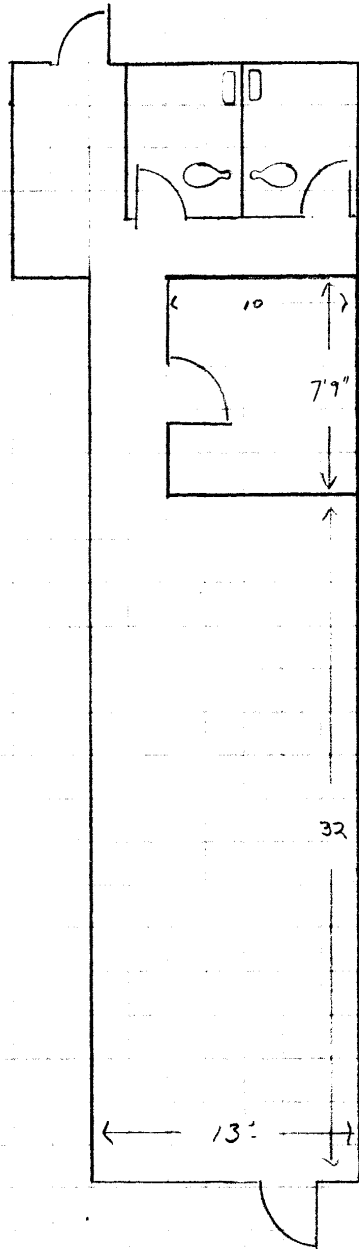
SITE PLAN



1900 Northwest Highway, Grapevine, TX

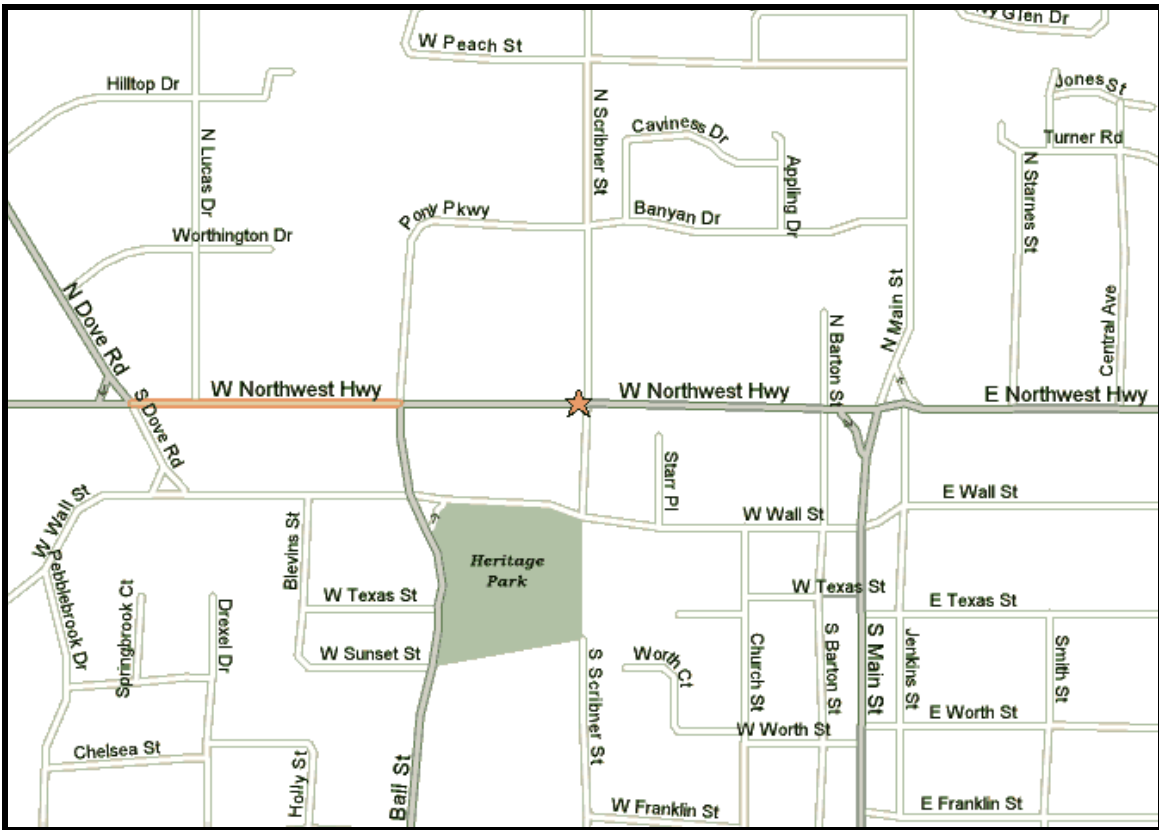
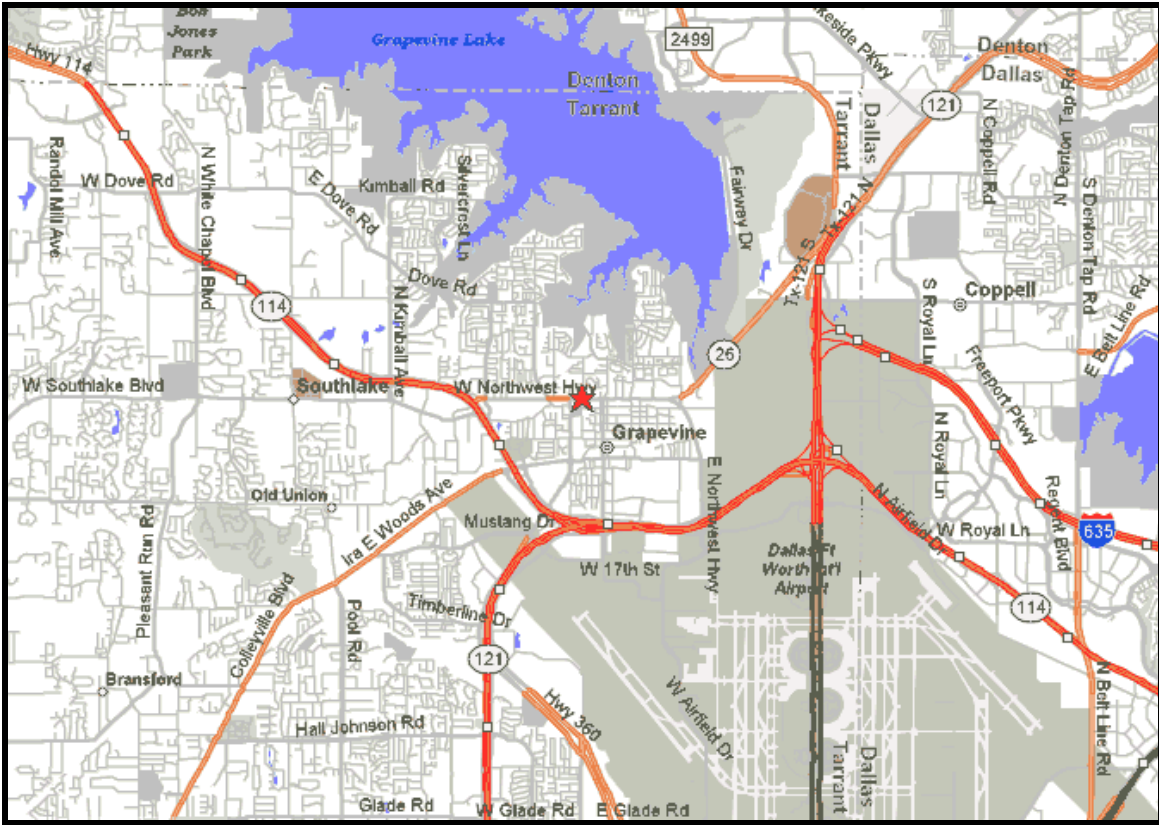
This information is believed to be accurate, but no representation or warranty, express or implied, as to its accuracy or completeness is made by any party. The presentation of this property is submitted subject to errors, omissions, change of price or prior sale or lease, or withdrawal without notice.

Suite D – FLOOR PLAN



600 W. 110th St
GRAPESVILLE, TX

APPROX 650 SF



600 W. Northwest Highway, Grapevine, TX

This information is believed to be accurate, but no representation or warranty, express or implied, as to its accuracy or completeness is made by any party. The presentation of this property is submitted subject to errors, omissions, change of price or prior sale or lease, or withdrawal without notice.