

# RETAIL OR OFFICE SPACE FOR LEASE

Flower Mound, Texas



- LOCATION:** 2021 Morriss Road, Suite 200
- DESCRIPTION:** Shell building located at the northwest corner of Morriss Road and FM 3040 (Flower Mound Road). Other businesses in this professional office/retail park include CVS Pharmacy and a bank.
- LEASE RATE:** \$18.00/SF Base plus NNNs (\$5.50)
- TI ALLOWANCE:** \$20/SF
- SIZE:** 1,520 SF
- AVAILABLE:** Immediately

**For further information contact: Phyllis Garcia**



**Vintage Realty**

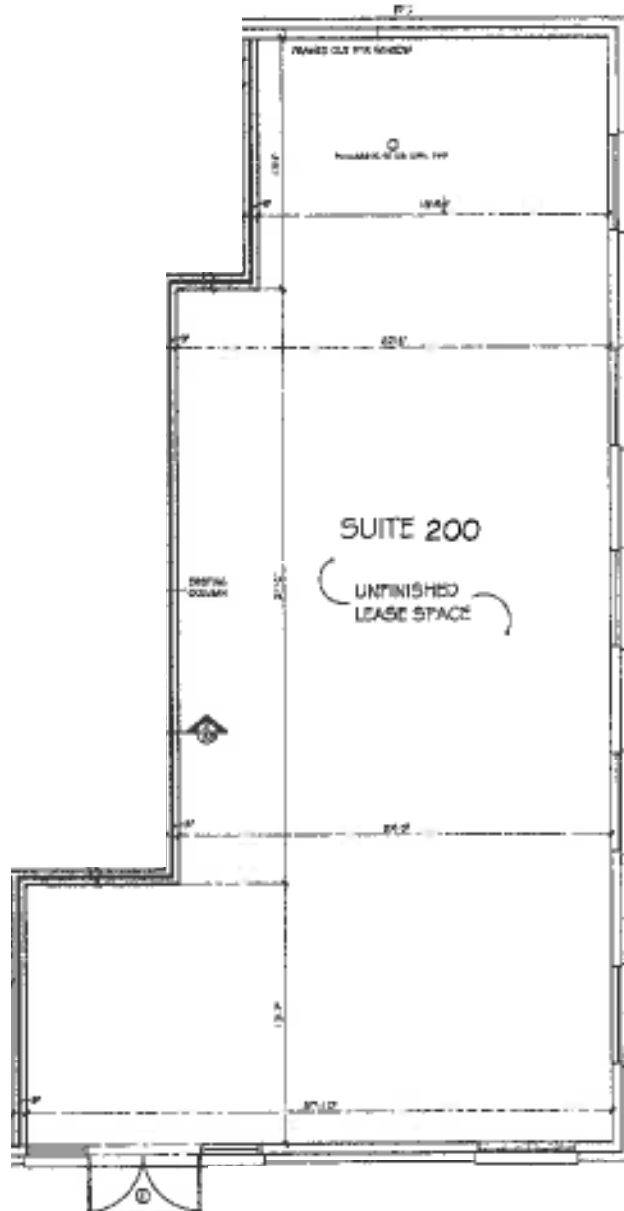
2980 Long Prairie Road, Suite D

Flower Mound, TX 75022

972/355-0669 or Fax 972/355-5477

email: [phyllis@vintagerealty.net](mailto:phyllis@vintagerealty.net) [www.VintageRealty.net](http://www.VintageRealty.net)

2021 Morriss Road, Suite 200  
Flower Mound, TX



# 2021 Morriss Road Flower Mound, TX

