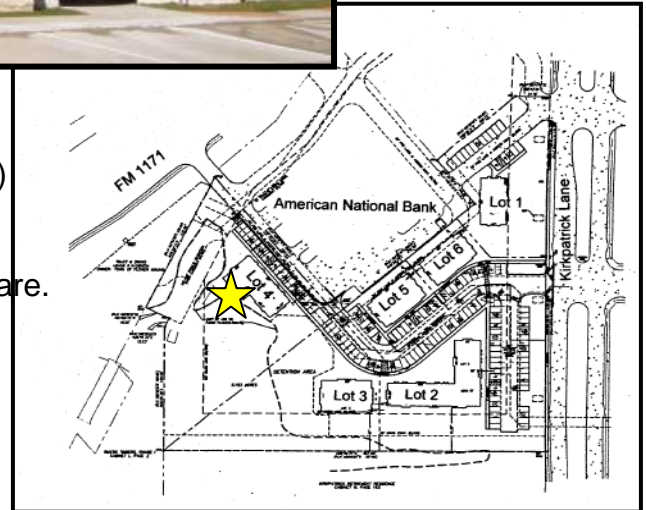


FOR SALE
BUILDING 4
SHELL BUILDING on PLATTED LOT
Flower Mound, TX



LOCATION: 1241 Cross Timbers Road
(FM 1171 and Kirkpatrick Lane)
Located next to the American National Bank Building and Walgreens, east of Parker Square.

BUILDING SIZE: 4,500 SF
LOT SIZE: 1.417 Acres

PRICE: \$675,000
(Special pricing for contract signed by December 31, 2008.)

IMPROVEMENTS INCLUDE: Shell building with: common driveways, parking lot for building, gas meter to the building, electric meter set on outside of shell building, water stubbed into the building, landscaping and irrigation system, Cat 6 to building

AVAILABLE: Immediately

For further information contact: Phyllis Garcia



Vintage Realty
2980 Long Prairie Road, Suite D
Flower Mound, TX 75022
972/355-0669 or Fax 972/355-5477
email: phyllis@vintagerealty.net www.VintageRealty.net

This information is believed to be accurate, but no representation or warranty, express or implied, as to its accuracy or completeness is made by any party. The presentation of this property is submitted subject to errors, omissions, change of price or prior sale or lease, or withdrawal without notice.