

# MEDICAL OFFICE SPACE FOR LEASE

## LEWISVILLE, TX



- LOCATION:** Two story – 45,000 Square Foot Professional Office Building at 190 Civic Circle across from the newly expanded Lewisville Library and next to the Post Office. Easy access to I-35E and Main Street.
- SIZE:** Suite 272 – 2,121 RSF. Former doctor's office with 4 exam rooms.  
Suite 155 – 2,004 RSF (Could be combined with Suite 150 for total 2879 RSF) Former doctor's office with 4 exam rooms.  
2<sup>nd</sup> Floor – Shell space. 1,000 – 10,210 RSF
- LEASE RATE:** \$16.50/SF Base and NNNs (\$5.00/SF) plus electric and janitorial  
Shell space – turnkey finish-out
- AVAILABLE:** Immediately

**For further information contact: Phyllis Garcia or Rich Muller**



**Vintage Realty**

[Phyllis@VintageRealty.net](mailto:Phyllis@VintageRealty.net) 2980 Long Praire Road, Suite D

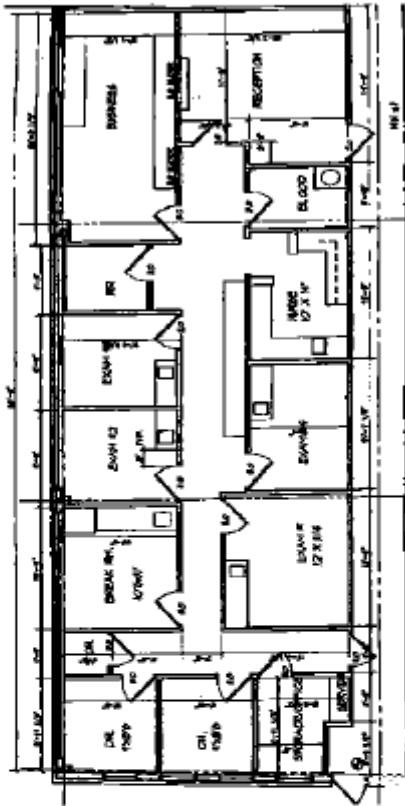
Flower Mound, TX 75022

972/355-0669 or Fax 972/355-5477

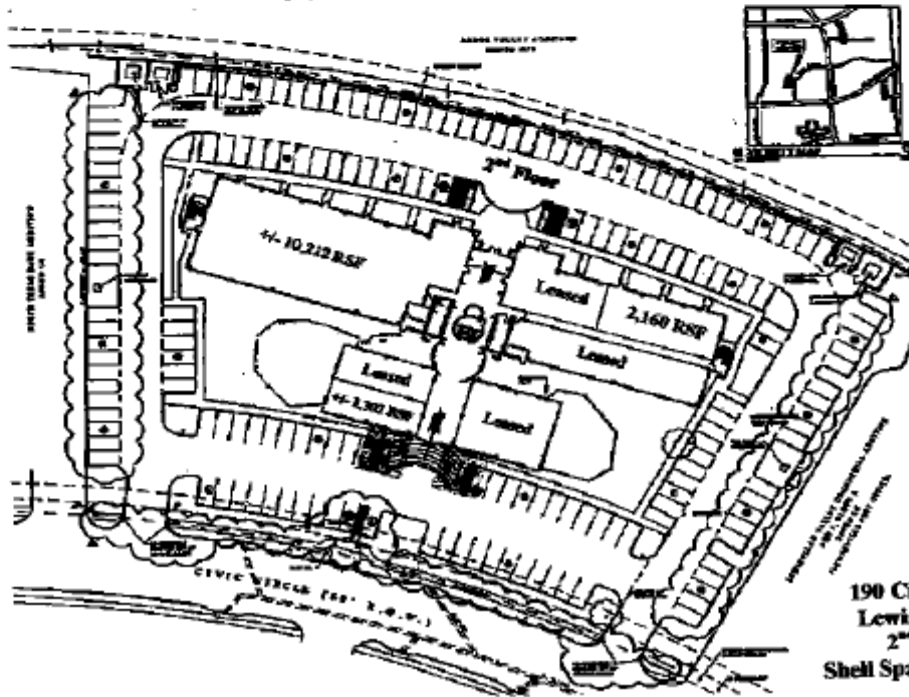
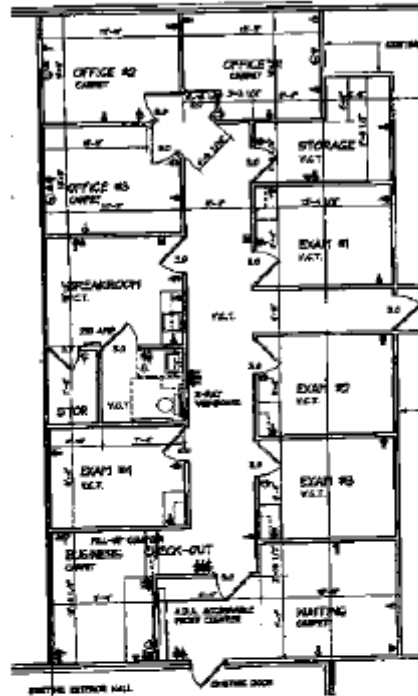
Email:, [Rich@VintageRealty.net](mailto:Rich@VintageRealty.net) or Web Site: [www.VintageRealty.net](http://www.VintageRealty.net)

190 Civic Circle  
Lewisville, Texas

Suite 272



Suite 155



190 Civic Circle  
Lewisville, TX  
2<sup>nd</sup> Floor  
Shell Space Available

# 190 Civic Circle Lewisville, TX

