

1,280 SF
LYNN SQUARE PROFESSIONAL OFFICE PARK
OFFICE SPACE FOR LEASE
LEWISVILLE, TX



- LOCATION:** 118 Lynn Avenue, Suite 400; Across from The Medical Center of Lewisville
- AVAILABLE:** 1,280 square feet available in the front half of a two tenant building.
- LEASE RATE:** \$1,950.00 per month base rent plus electricity.
- Build-Out:** Landlord will provide turn key standard office finishout.
- AREA:** Easy access to I-35E on the West.
- COMMENTS:** Space is suitable for Medical or Professional Office use.

For further information contact: Fred Muller or Phyllis Garcia



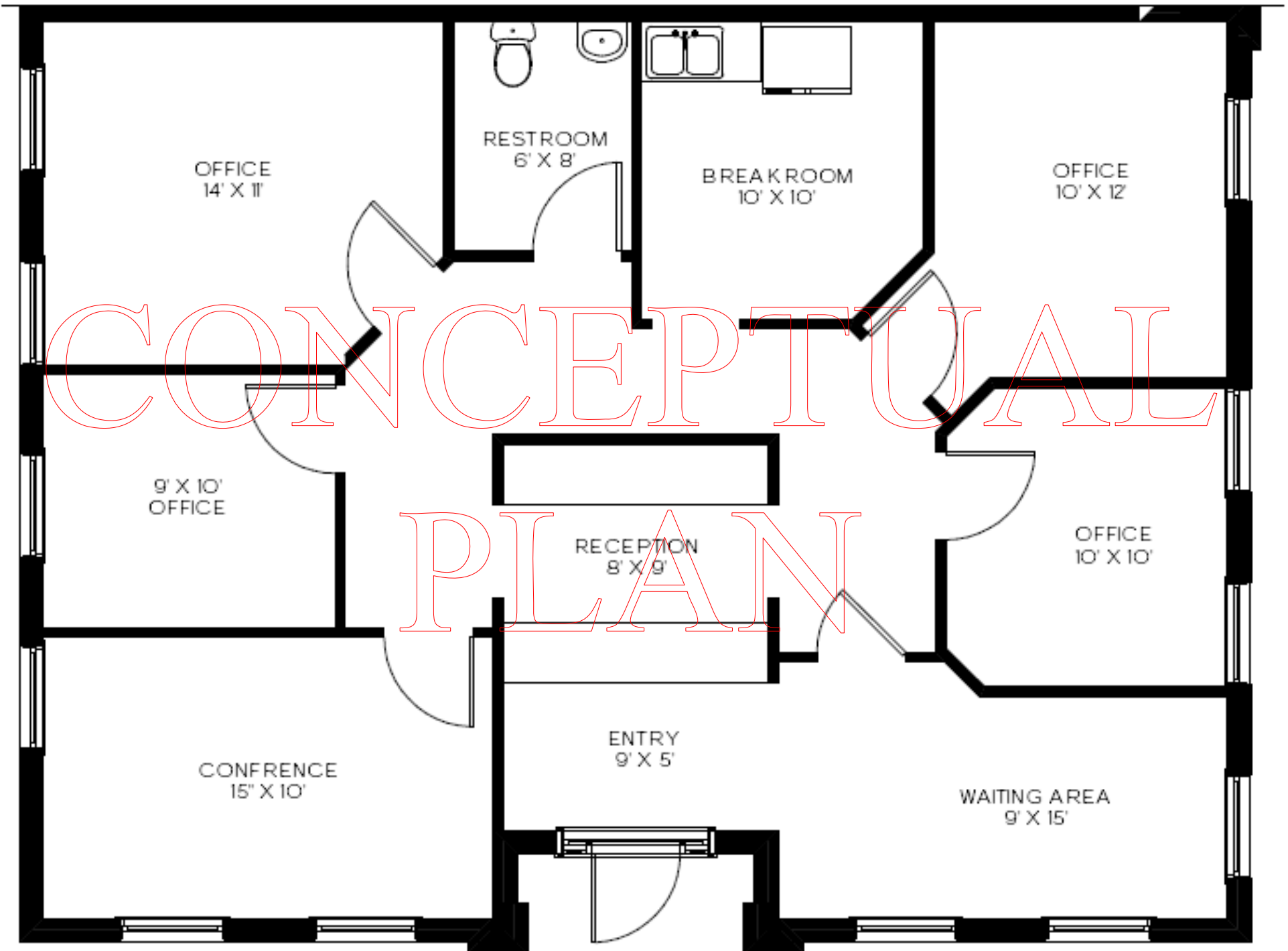
Vintage Realty

2980 Long Prairie Rd., Suite D

Flower Mound, TX 75022

972/355-0669 or Fax 972/355-5477

Email: Fred@VintageRealty.net; Phyllis@VintageRealty.net or Web Site: www.VintageRealty.net



OFFICE
14' X 11'

RESTROOM
6' X 8'

BREAKROOM
10' X 10'

OFFICE
10' X 12'

9' X 10'
OFFICE

RECEPTION
8' X 9'

OFFICE
10' X 10'

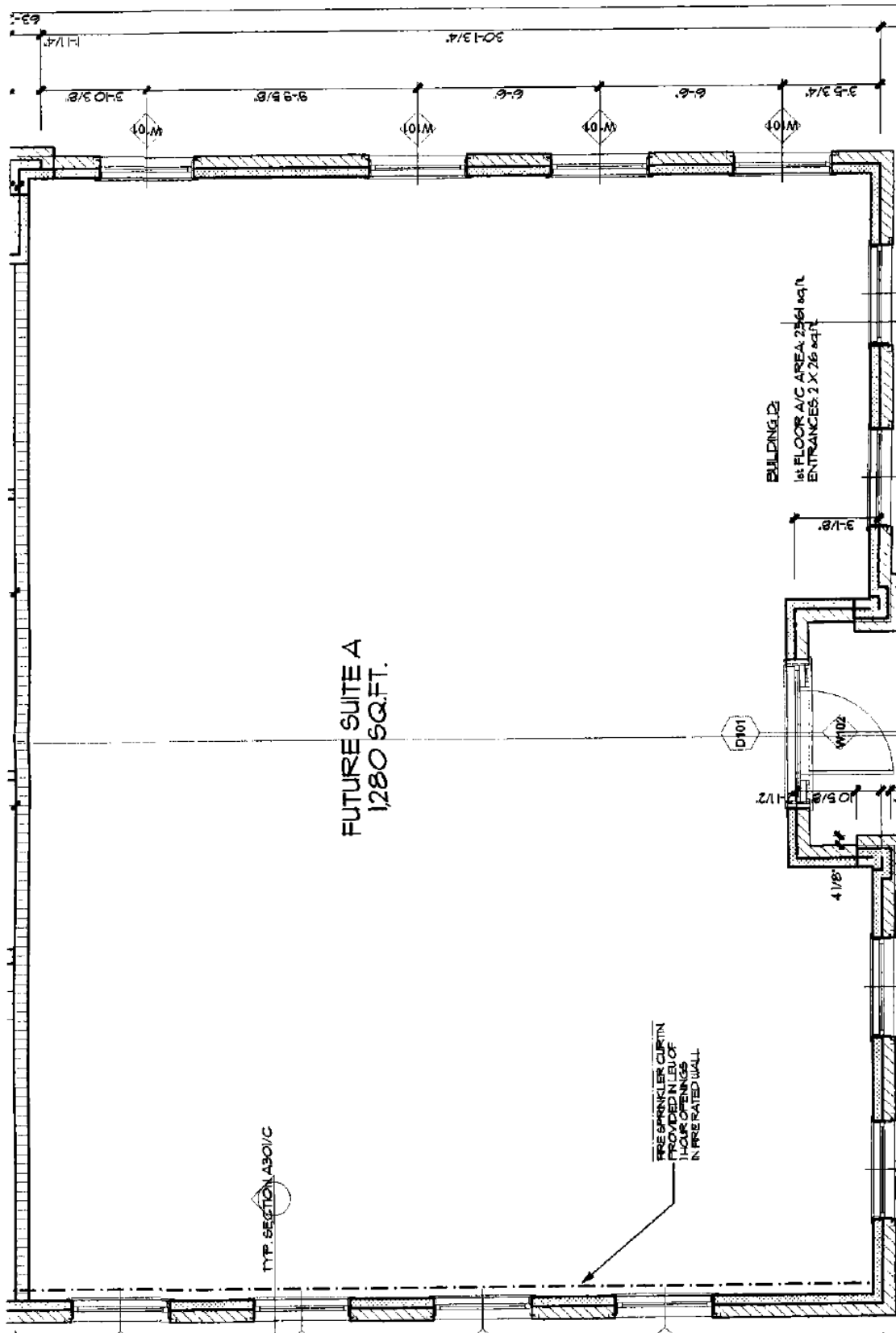
CONFERENCE
15' X 10'

ENTRY
9' X 5'

WAITING AREA
9' X 15'

CONCEPTUAL
PLAN

118 Lynn Square
Lewisville, TX



Lynn Square 118 Lynn Avenue Lewisville, TX

