

# OFFICE SPACE FOR LEASE

Lewisville, Texas



- LOCATION:** Suite 300, 809 Office Park Circle, Lewisville, Texas. Office building located off Hillside Drive with easy access to Main Street, Valley Parkway and I35E.
- SIZE:** 803 SF
- LEASE RATE:** \$1,137.58/month (\$17/SF/YR) plus electric and janitorial.
- AVAILABLE:** August 1, 2011 or negotiable.

**For further information contact: Phyllis Garcia**



**Vintage Realty**

2980 Long Prairie Rd., Suite D

Flower Mound, TX 75022

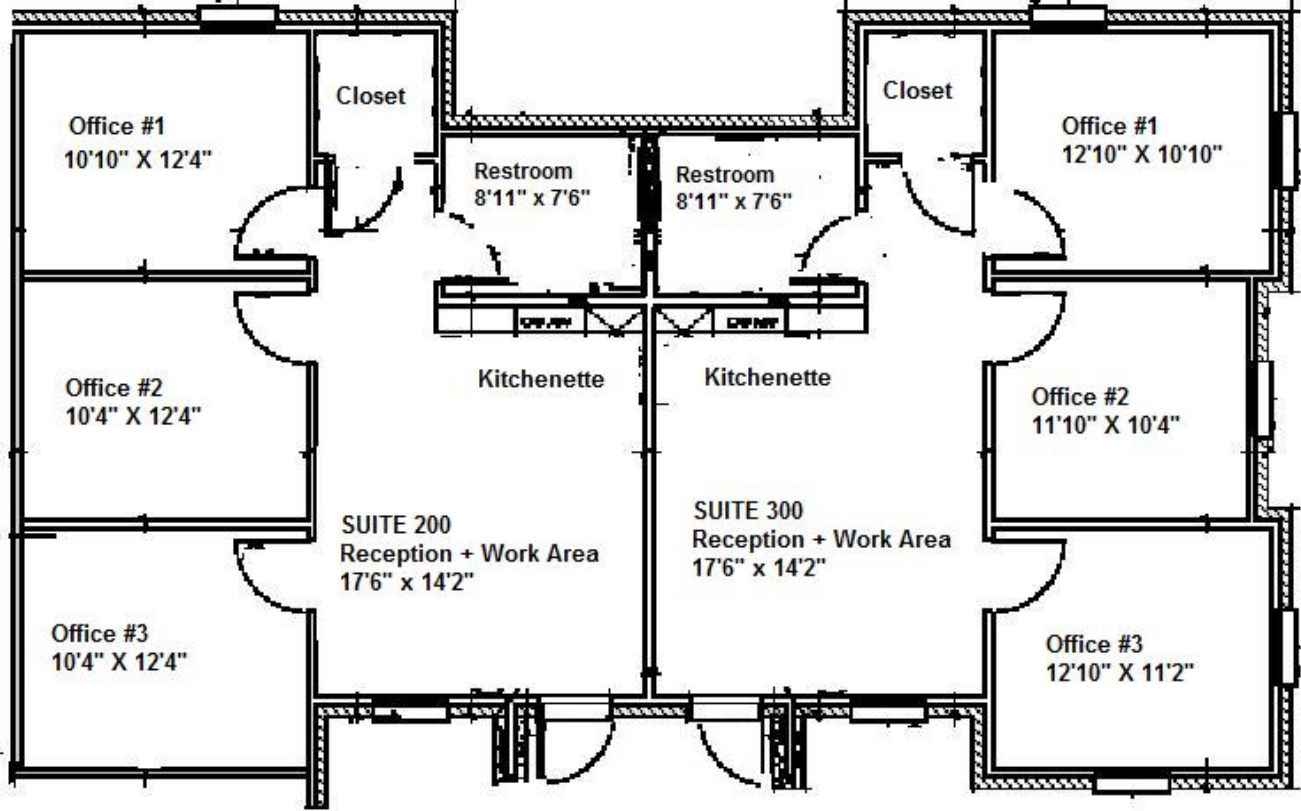
972/355-0669 or Fax 972/355-5477

email: [phyllis@vintagerealty.net](mailto:phyllis@vintagerealty.net)

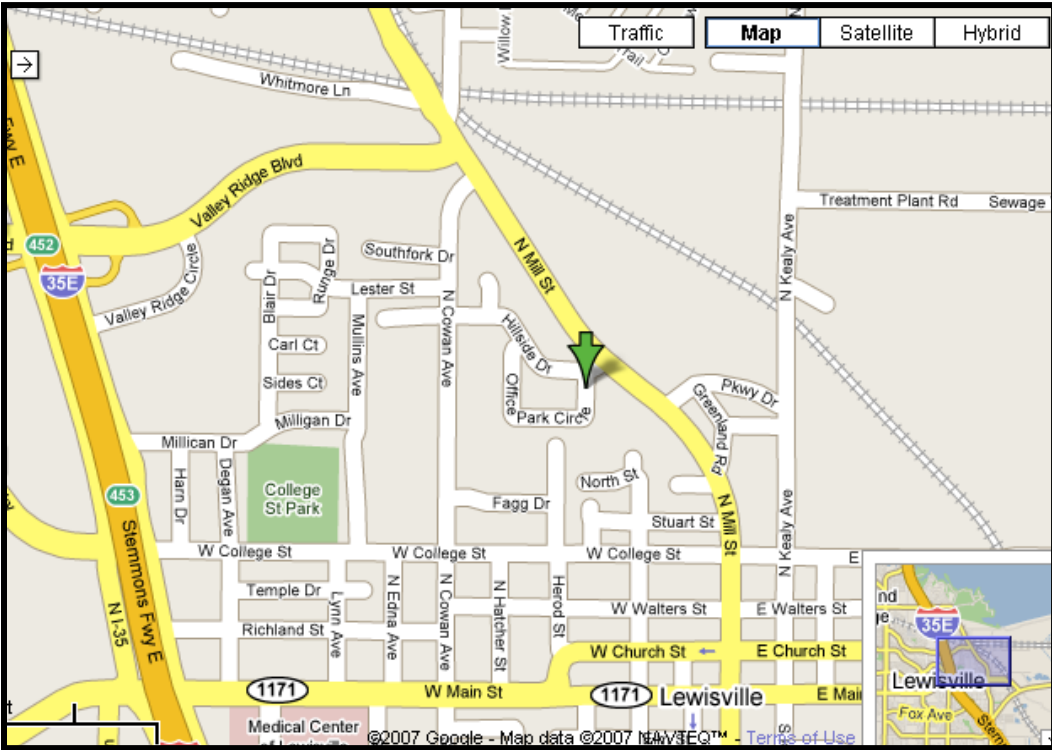
website: [www.VintageRealty.net](http://www.VintageRealty.net)

This information is believed to be accurate, but no representation or warranty, express or implied, as to its accuracy or completeness is made by any party. The presentation of this property is submitted subject to errors, omissions, change of price or prior sale or lease, or withdrawal without notice.

# 809 Office Park Circle Floor Plan Lewisville, TX



**Suite 300**  
**803 SF**



# 809 Office Park Circle Lewisville, TX

