

# **FOR LEASE OR SALE**

## **LEWISVILLE, TEXAS**



- LOCATION:** 2274 Rockbrook Drive. Located north of FM 3040 (Round Grove Road), close to Vista Ridge Shopping Center. Easy access to I35.
- SIZE:** Approximately 15,000 SF, two-story building with elevator (could be demised.)
- LEASE RATE:** Base \$14.50/SF/yr plus NNNs (\$4.00 SF/yr) and electric
- SALES PRICE:** \$1,900,000.00
- AVAILABLE:** Immediately

**For further information contact: Phyllis Garcia**



**Vintage Realty**

2980 Long Prairie Road, Ste. D

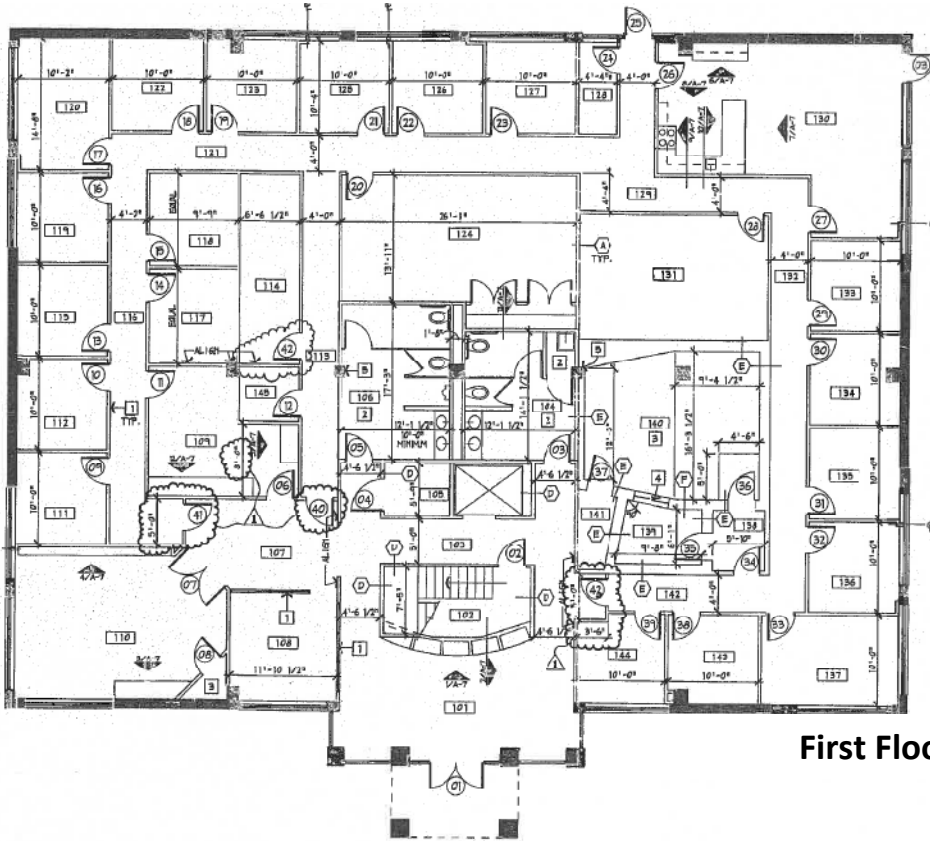
Flower Mound, TX 75022

972/355-0669 or Fax 972/355-5477

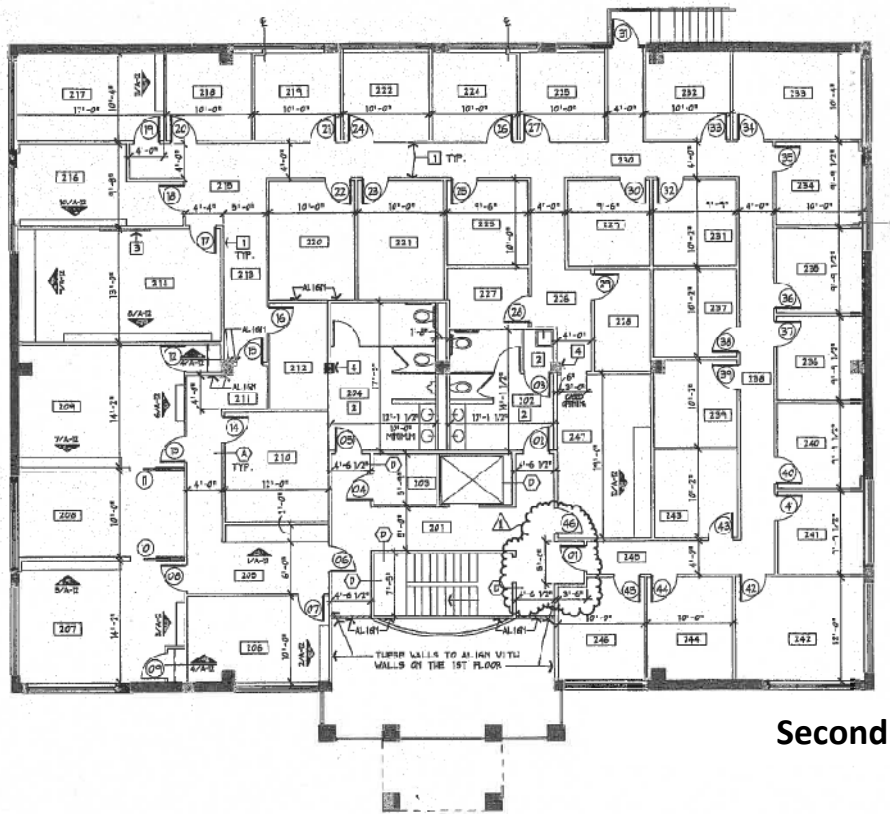
email: [phyllis@vintagerealty.net](mailto:phyllis@vintagerealty.net) [www.VintageRealty.net](http://www.VintageRealty.net)

This information is believed to be accurate, but no representation or warranty, express or implied, as to its accuracy or completeness is made by any party. The presentation of this property is submitted subject to errors, omissions, change of price or prior sale or lease, or withdrawal without notice.

2274 Rockbrook Drive  
Lewisville, Texas



First Floor



Second Floor

2274 Rockbrook Drive  
Lewisville, TX

