

# Finished Medical Office Space for Lease

## FLOWER MOUND, TX



- LOCATION:** 2980 Long Prairie Road, Suite E; located on FM 2499 just 1.2 miles south of the new Presbyterian Hospital and Riverwalk Project.
- SIZE:** 4,544 SF (can be divided)
- RENT:** \$16.50/SF/Yr plus NNNs
- SUITE:** Finished medical space includes: 12 Exam Rooms, 2 Offices, Reception Area, Waiting Room, Lab, Nurses Stations, Administration and X-Ray Room.
- NEIGHBORING OFFICE PARK TENANTS:** Insurance, Physicians, Real Estate, Chiropractor, Physical Therapy, Dentist
- SIGNAGE:** Monument Signage on FM 2499 (Long Prairie Road)
- AVAILABLE:** Immediately

**For further information contact: Phyllis Garcia**

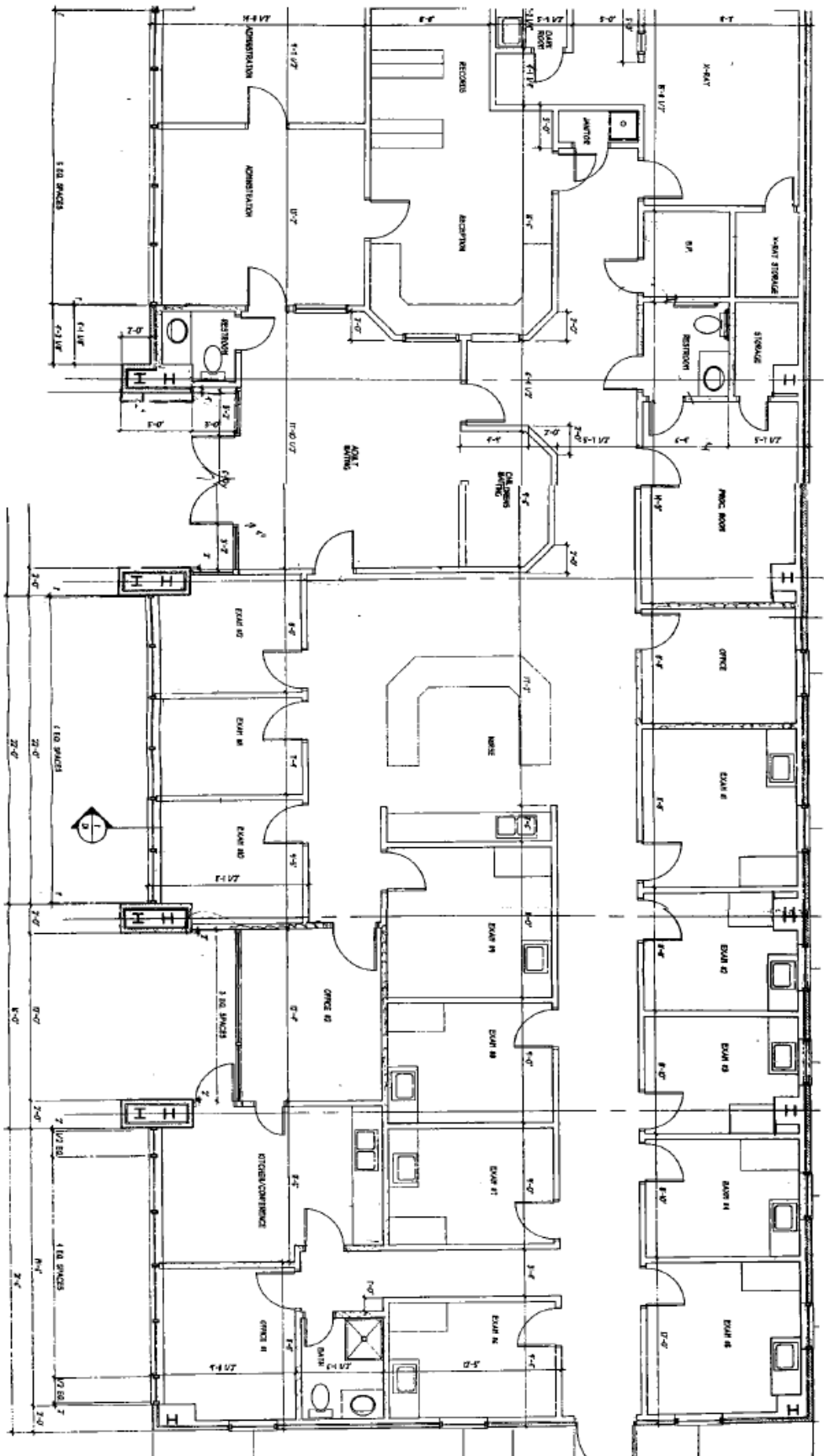


**Vintage Realty**

2980 Long Prairie Rd., Suite D  
Flower Mound, TX 75022  
972/355-0669 or Fax 972/355-5477

Email: [Phyllis@VintageRealty.net](mailto:Phyllis@VintageRealty.net) or Web Site: [www.VintageRealty.net](http://www.VintageRealty.net)

2980 Long Prairie Road  
Suite E



# 2980 Long Prairie Road Flower Mound, TX

