

Office Space for Lease
2670 Firewheel Drive
Flower Mound, Texas



LOCATION: 2670 Firewheel Drive (corner of FM 2499 and Firewheel Drive). Located in a beautiful, office park with lush trees and a quiet setting.

SPACE AVAILABLE: Suite C – 1,900 SF.

LEASE RATES: Suite C—\$12.00/SF Base plus NNNs and electric

AVAILABLE: Immediately

For further information contact: Phyllis Garcia



Vintage Realty

2980 Long Prairie Road, Suite D

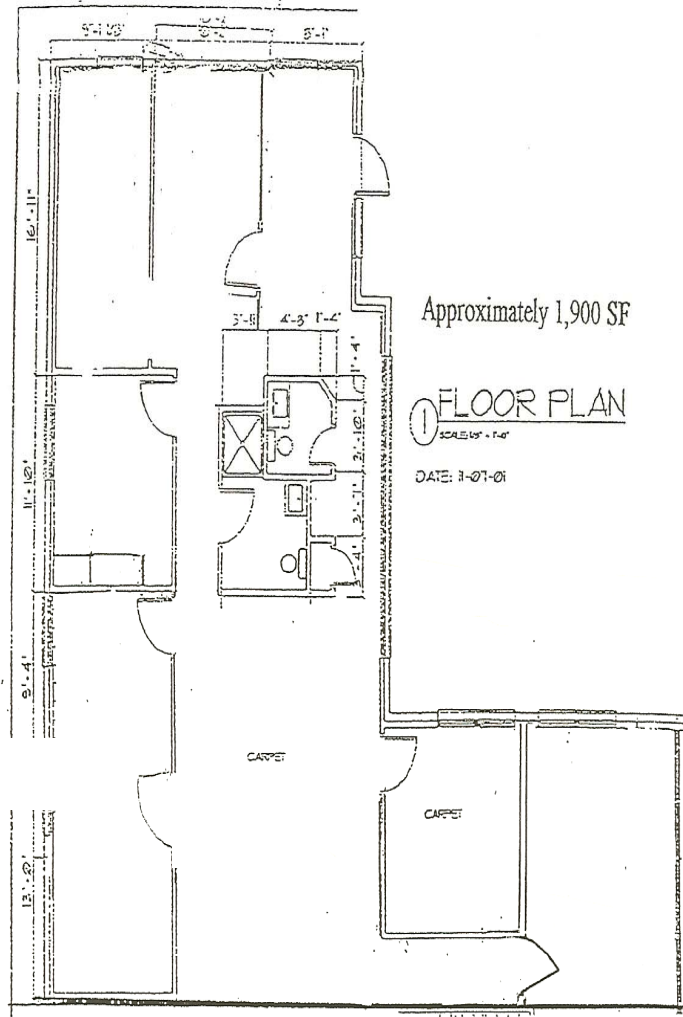
Flower Mound, TX 75022

972/355-0669 or Fax 972/355-5477

email: phyllis@vintagerealty.net www.VintageRealty.net

This information is believed to be accurate, but no representation or warranty, express or implied, as to its accuracy or completeness is made by any party. The presentation of this property is submitted subject to errors, omissions, change of price or prior sale or lease, or withdrawal without notice.

**2670 Firewheel Dr.
Suite C
Flower Mound, TX**



For further information contact: Phyllis Garcia



Vintage Realty

2980 Long Prairie Road, Suite D

Flower Mound, TX 75022

972/355-0669 or Fax 972/355-5477

email: phyllis@vintagerealty.net www.VintageRealty.net

**2670 Firewheel Drive
Suite D
Flower Mound, TX**

