

# Commercial Land For Sale

+/-2.499 Acres and 0.704 Acres

## Lewisville, TX



**LOCATION:** NWQ of Valley Parkway and FM 3040 (Round Grove Rd.). Along with a “Tom Thumb” Shopping Center, a “Walgreens,” “Bahama Bucks” and a “McDonald’s,” the Property abuts Parkway Elementary School to the North.

**ZONING:** “LC” – “Local Commercial” – Retail, Service or Office.

**FRONTAGE:** Lot 5: +/-150’ - Lot 6-A: 98’

**SALES PRICE:** Lot 5: **\$761,843. (\$7.00/SF).**  
Lot 6-A: **\$229,868. (\$7.50/SF).**

For further information contact: Rich Muller



**Vintage Realty**

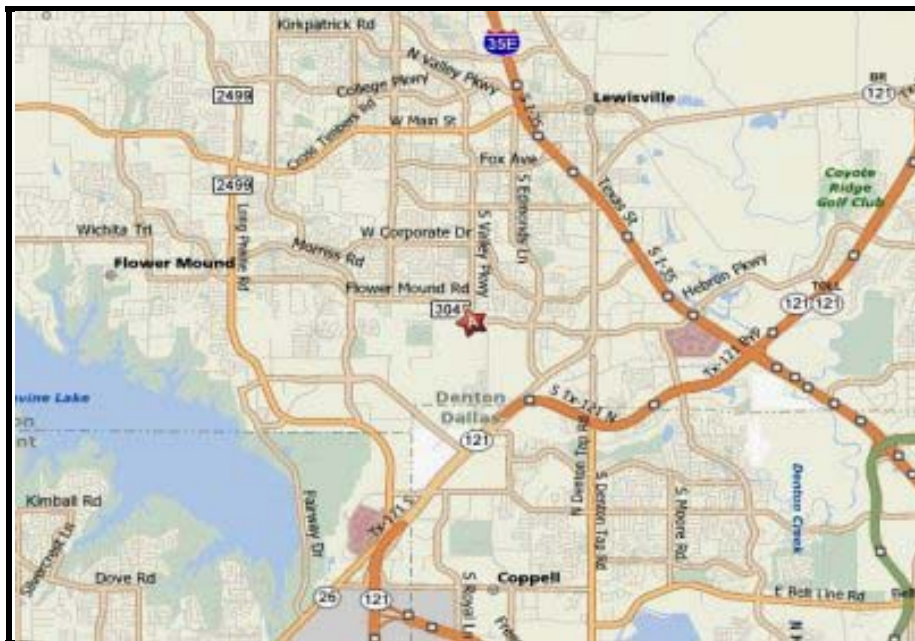
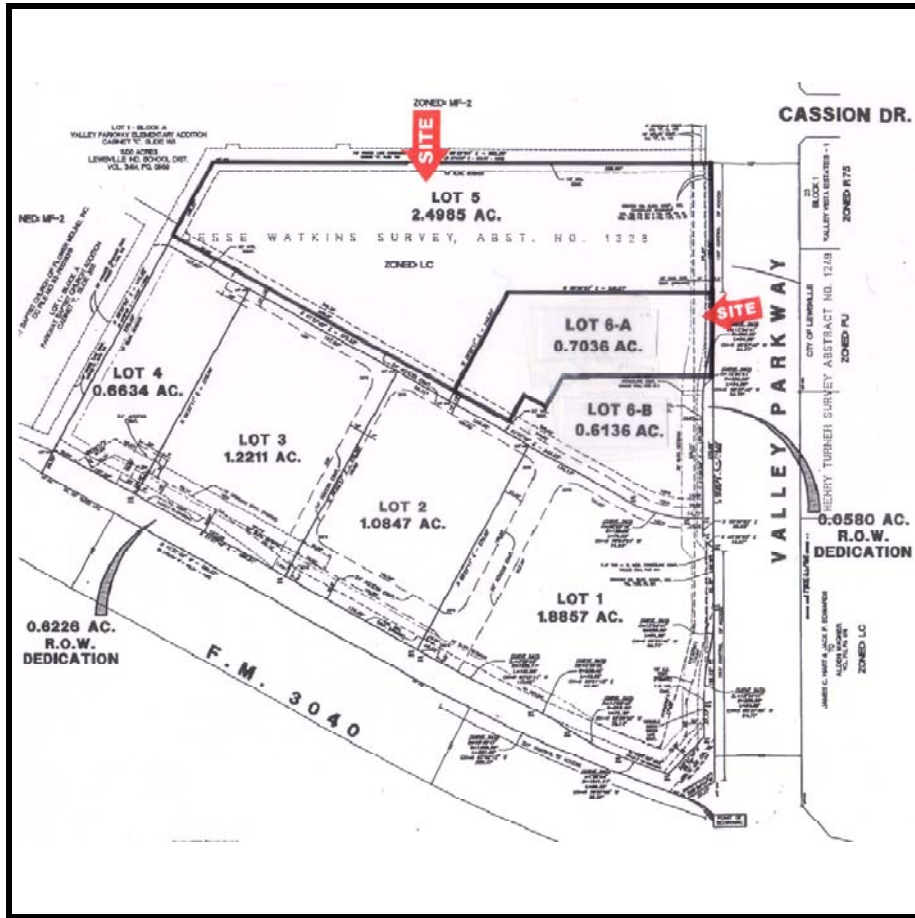
2980 Long Prairie Rd., Suite D

Flower Mound, TX 75022

972/355-0669 or Fax 972/355-5477

Email: [Rich@VintageRealty.net](mailto:Rich@VintageRealty.net) or, [www.VintageRealty.net](http://www.VintageRealty.net)

# NWQ Valley Parkway and FM 3040, Lewisville, TX



This information is believed to be accurate, but no representation or warranty, express or implied, as to its accuracy or completeness is made by any party. The presentation of this Property is submitted subject to errors, omissions, change of price or prior sale or lease, or withdrawal without notice.