

# Industrial Land For Sale

+/-3.57 Acres

Lewisville, TX



**LOCATION:** 405 E. College St. (Henrietta dead ends at the Property from the south. 2 blocks from the new DART "light rail" station (under construction).

**SITE:** Currently being used to park buses and trucks – site has 2 levels

**ZONING:** "LI" – "Light Industrial".

**SALES PRICE:** \$500,000 (\$3.20/SF).

For further information contact: Rich Muller



**Vintage Realty**

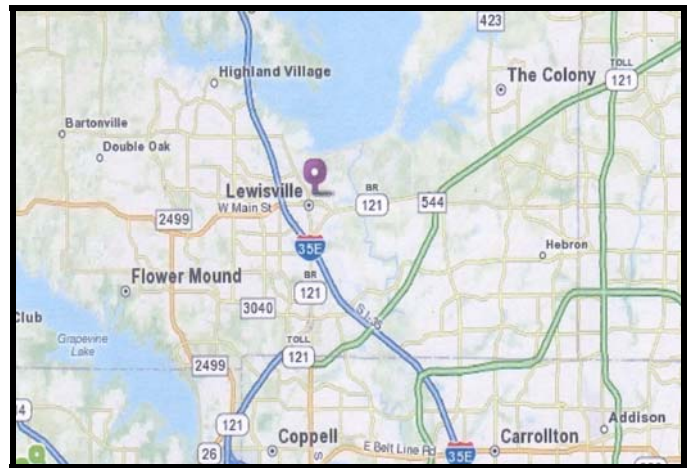
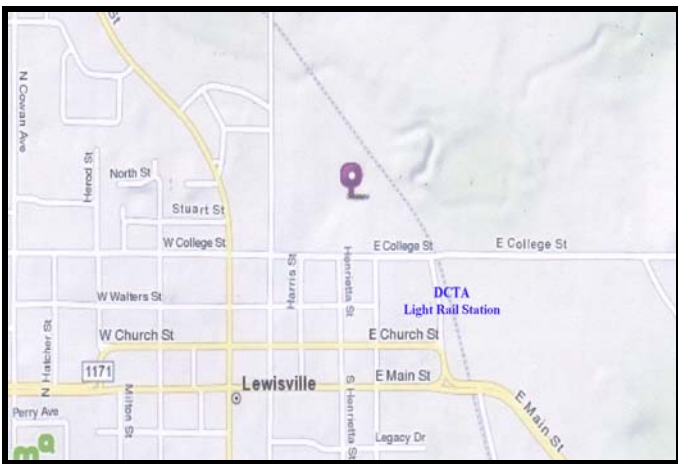
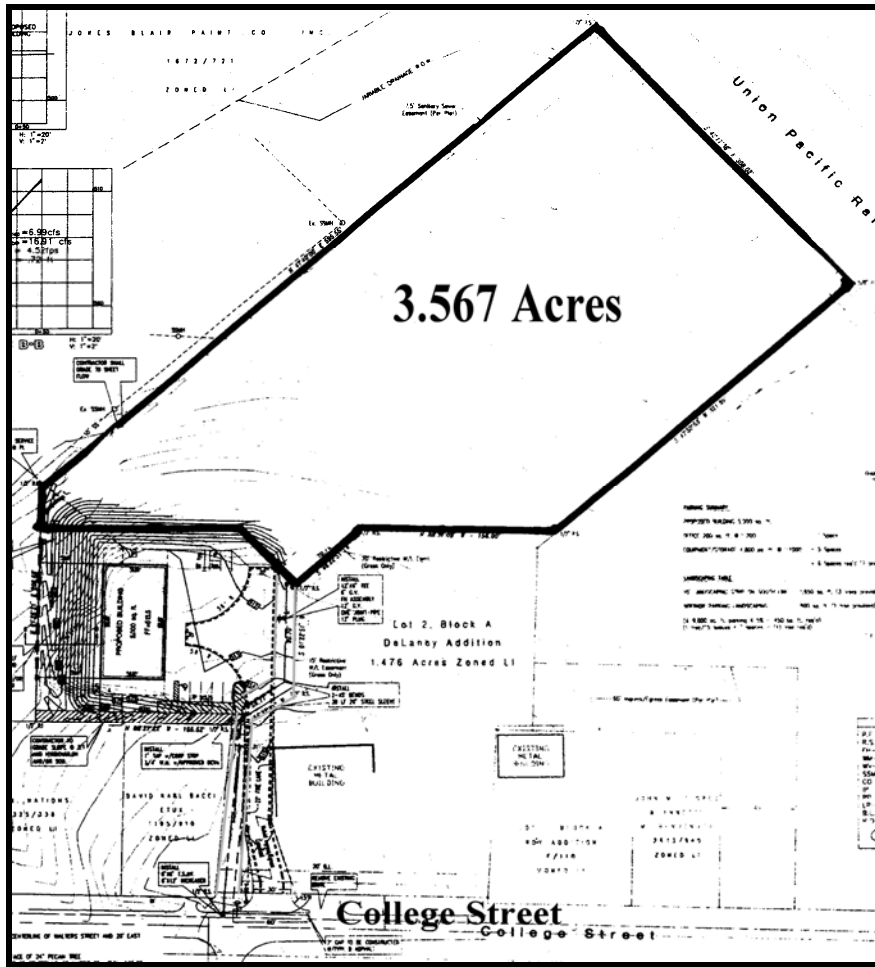
2980 Long Prairie Rd., Suite D

Flower Mound, TX 75022

972/355-0669 or Fax 972/355-5477

Email: [Rich@VintageRealty.net](mailto:Rich@VintageRealty.net) or, [www.VintageRealty.net](http://www.VintageRealty.net)

This information is believed to be accurate, but no representation or warranty, express or implied, as to its accuracy or completeness is made by any party. The presentation of this Property is submitted subject to errors, omissions, change of price or prior sale or lease, or withdrawal without notice.



This information is believed to be accurate, but no representation or warranty, express or implied, as to its accuracy or completeness is made by any party. The presentation of this Property is submitted subject to errors, omissions, change of price or prior sale or lease, or withdrawal without notice.