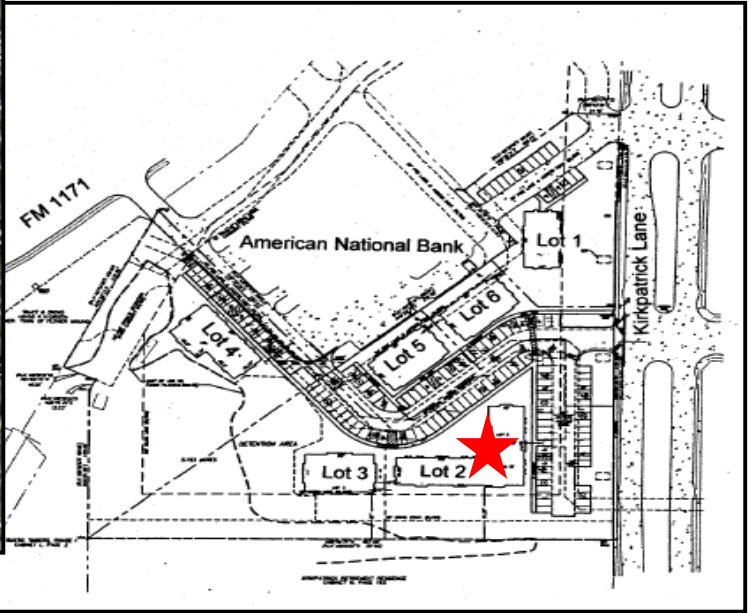
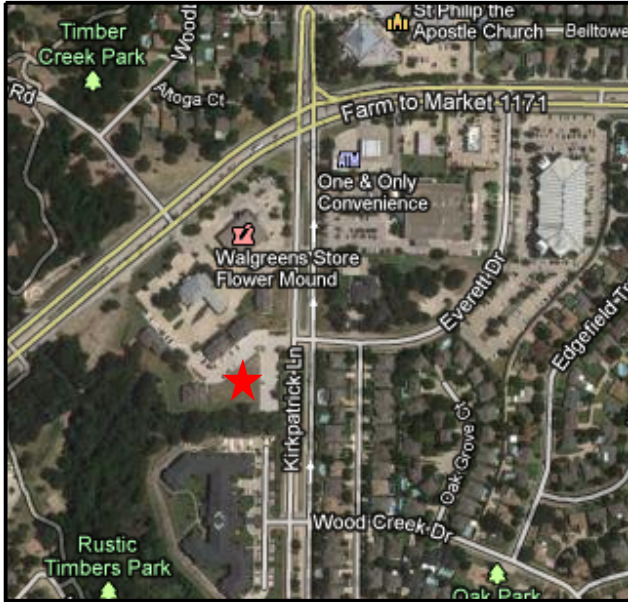


PRICE REDUCTION
LAND FOR SALE
PAD SITE ON PLATTED LOT – 1 Lot Remaining
Medical/Office Use
Flower Mound, TX



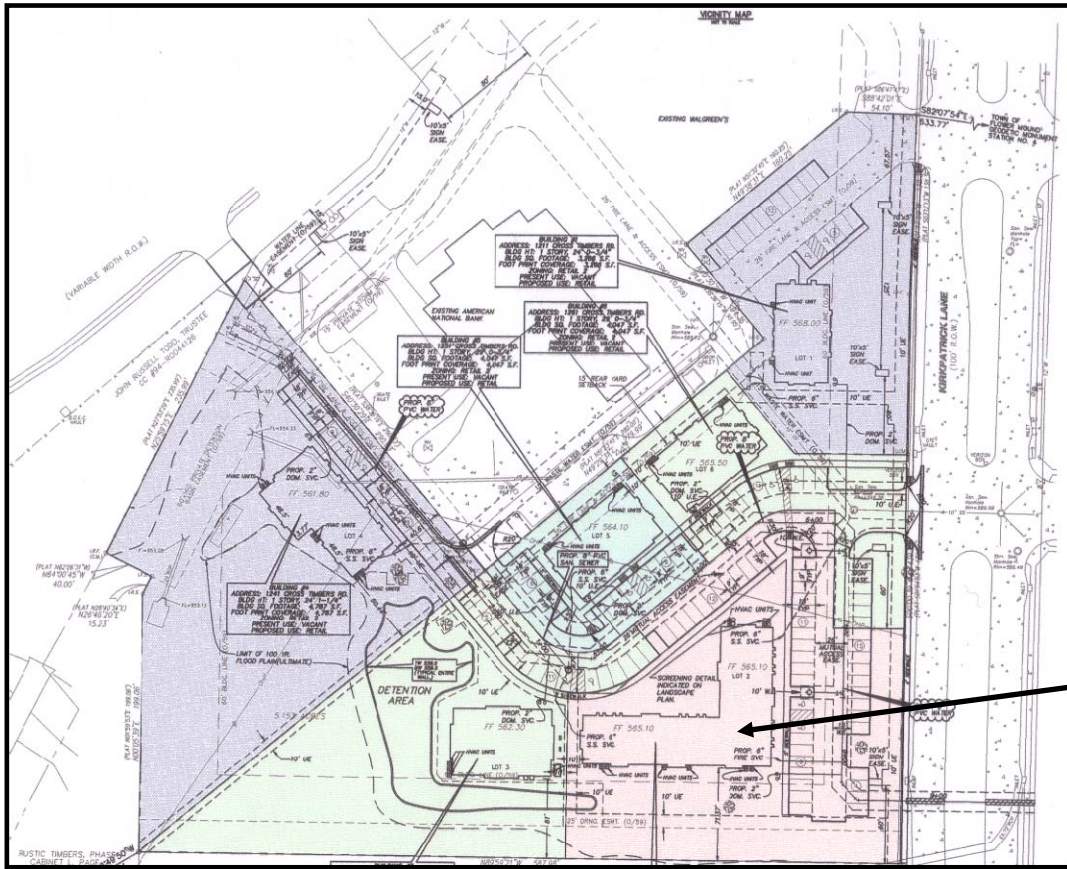
- LOCATION:** **4031 Kirkpatrick Lane, Flower Mound, Texas**
Last remaining platted lot for sale on Kirkpatrick Lane. Located south of American National Bank Building and Walgreens. Easy access to FM 1171 at signalized intersection and 2.98 miles to Texas Health Presbyterian Hospital.
- LOT SIZE AND PRICE:** Lot 2 – 1.216 acres. Accommodates building up to 8,616 SF.
- SALES PRICE:** \$470,000 (\$8.88/SF)
- EXISTING IMPROVEMENTS INCLUDE:** Common driveways, parking lot for building, and utilities to site. Preliminary shell building plans available.

For further information contact: Phyllis Garcia



Vintage Realty
2980 Long Prairie Road, Suite D
Flower Mound, TX 75022
972/355-0669 or Fax 972/355-5477
email: phyllis@vintagerealty.net www.VintageRealty.net

LAND FOR SALE
Lot 2
Flower Mound, TX



LOT 2

