

Office Space for Lease

2670 Firewheel Drive

Flower Mound, Texas



- LOCATION:** 2670 Firewheel Drive, Suite C (NEQ of FM 2499 and Firewheel Drive). Immediate access to Long Prairie Rd (FM 2499).
- SPACE AVAILABLE:** 1,900 SF - Reception, 6 Offices (1 Executive), Room for 2 Cubicles, Kitchen & Storage!
- LEASE RATE:** \$17.00/SF Base Rent plus NNNs.
- AVAILABLE:** 11/2023

For further information contact: Rich Muller



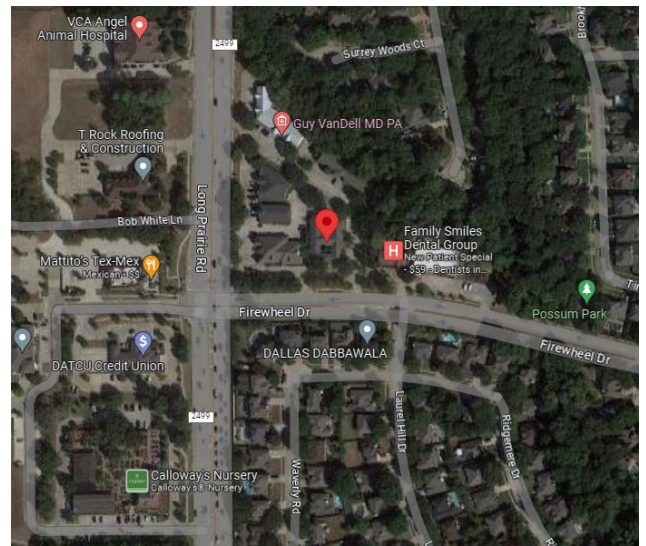
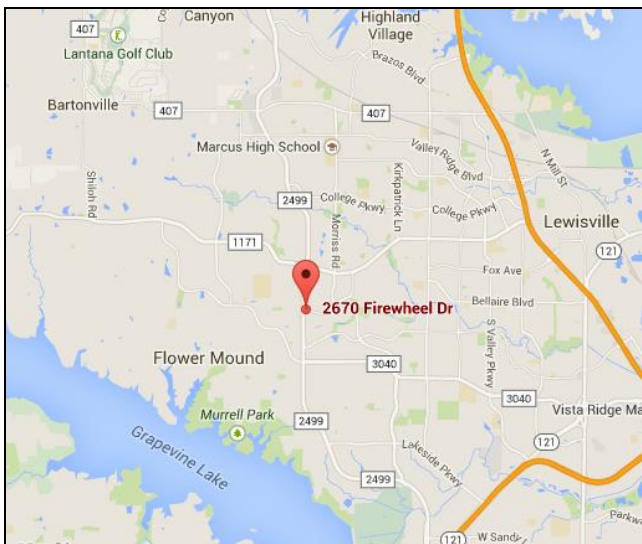
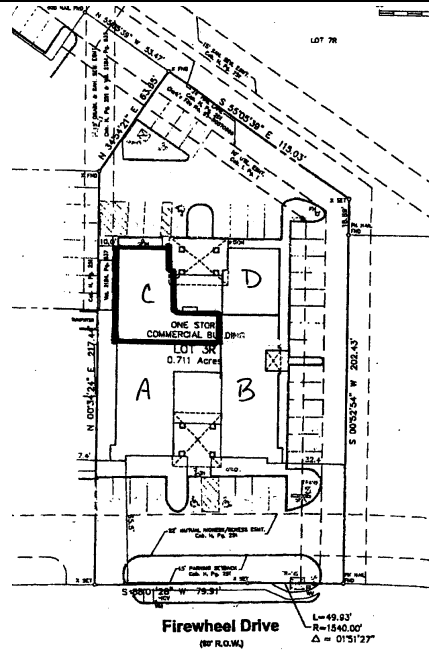
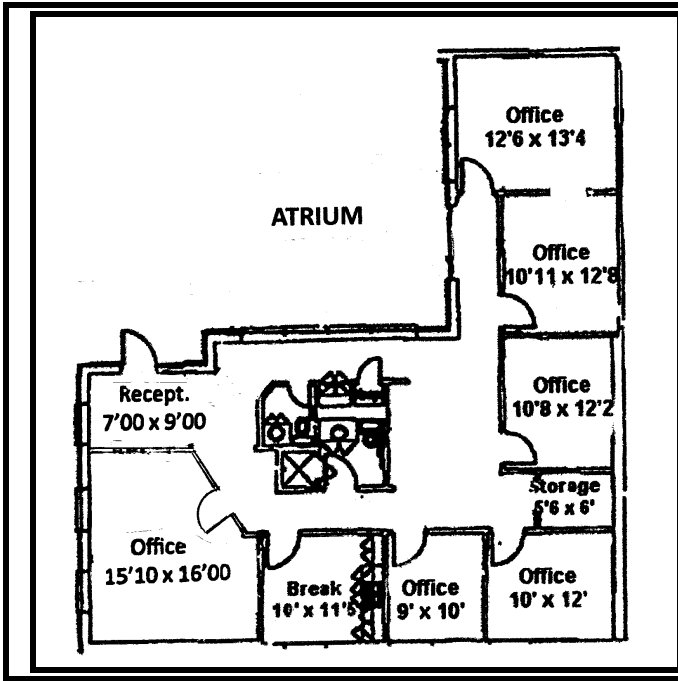
Vintage Realty

2980 Long Prairie Road, Suite D

Flower Mound, TX 75022

972/355-0669 or Fax 972/355-5477

email: Rich@VintageRealty.net ; www.VintageRealty.net



This information is believed to be accurate, but no representation or warranty, express or implied, as to its accuracy or completeness is made by any party. The presentation of this property is submitted subject to errors, omissions, change of price or prior sale or lease, or withdrawal without notice.