

Executive Office Suites FOR LEASE!

Sagebrush Office Park - Flower Mound, TX



LOCATION: 2609 Sagebrush Drive, Flower Mound, TX; located on SEQ of Long Prairie Rd. (FM 2499) and Sagebrush Dr. (Lighted Intersection).

EXPENSES: Utilities, taxes and maintenance paid by Landlord!! Tenant only pays for telephone and Internet (plus janitorial for their Suite).

Suite 203 -	679 SF	\$1,415.00/month – 3 offices
Suite 204 -	550 SF	\$1,100.00/month - 2 offices

For further information contact: Rich Muller



Vintage Realty

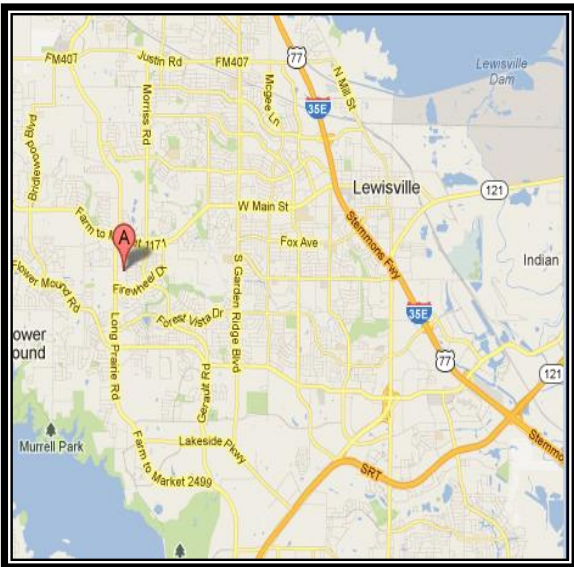
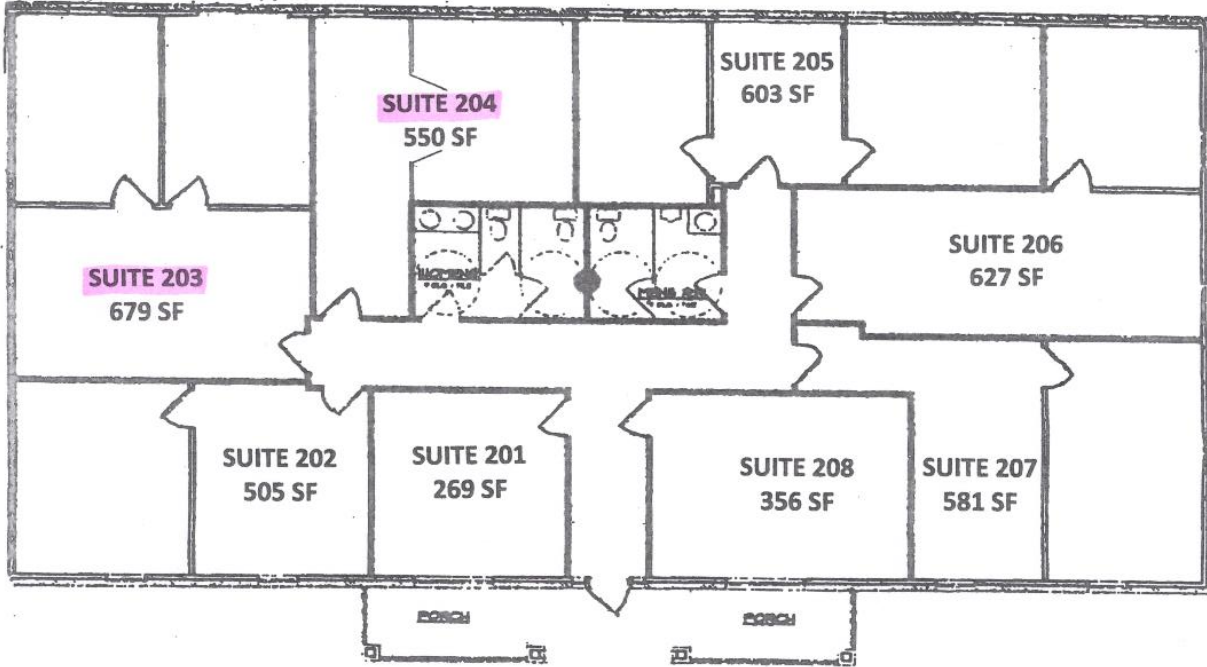
2980 Long Prairie Rd., Suite D

Flower Mound, TX 75022

972/355-0669 or Fax 972/355-5477

Email: Rich@VintageRealty.net Web Site: www.VintageRealty.net

2609 Sagebrush Dr.



This information is believed to be accurate, but no representation or warranty, express or implied, as to its accuracy or completeness is made by any party. The presentation of this property is submitted subject to errors, omissions, change of price or prior sale or lease, or withdrawal without notice.